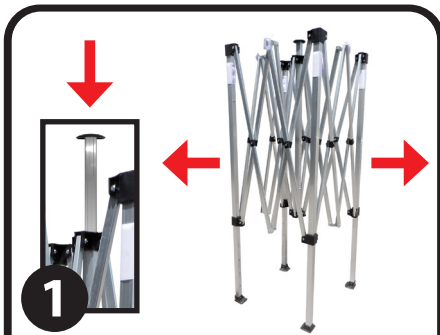


INSTRUCTIONS

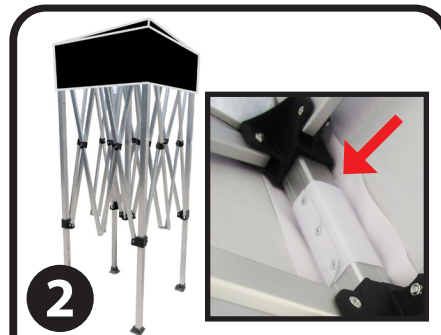
6.5' x 6.5' Canopy Tent



Includes:
Tent Frame
Truss Bar
Carrying Case with Wheels
Canopy Graphic



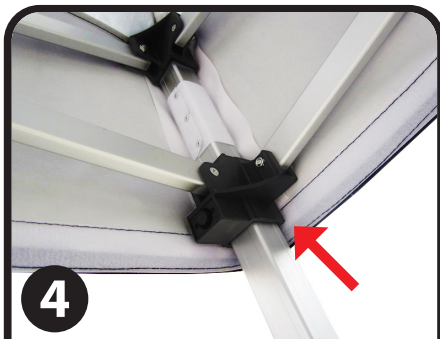
1 Insert truss bar into slot at center of frame. Place tent frame in center of final place. Pull frame outward (2 people recommended) from opposite sides while grasping legs. Lift off the ground and step backwards, stopping when 1/4 expanded.



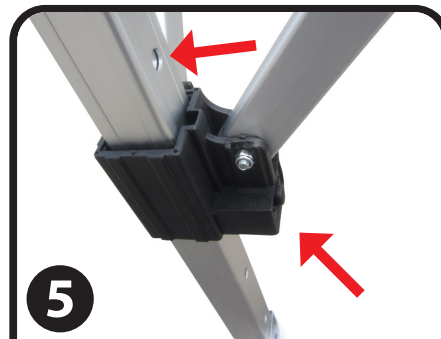
2 Place tent graphic over frame. DO NOT attach the fastener in the corners.



3 Expand the frame out fully by having each person stand on opposite sides, grasping the outer legs, lift up and step backwards at the same time until tent is fully opened.



4 Engage the auto slider at each corner by pushing up with one hand while holding down top of leg with the other hand. Snap button will engage in groove. Repeat on all other legs. Attach the fastener in the corners of the graphic.



5 Lift two adjacent outer legs and pull out the inner legs until you reach the snap locks. Repeat on all legs. Raise or level the tent using adjacent holes found near bottom of each leg.



IMPORTANT:
Windy Conditions - Stake or use weight bags.
Heavy Wind - Take tent down.
Wet Fabric - Let tent dry before closing.
Storage - Store in case when not in use.
Rain - Do not leave shelter unattended.



This product is for outdoor promotional use only and should not be left out in extreme weather conditions. Please use common sense guidelines and do not display this product outdoors when extreme winds or storms may be present. Unfinished edges of aluminum may be sharp, please take care when assembling.



Carrying Case: When inserting unassembled frame into carrying case, start with top of frame with the feet pointing toward zipper end of the case