

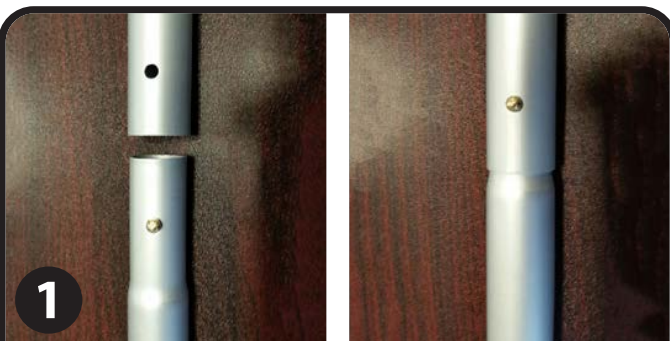
# INSTRUCTIONS

## Aluminum Display Pole



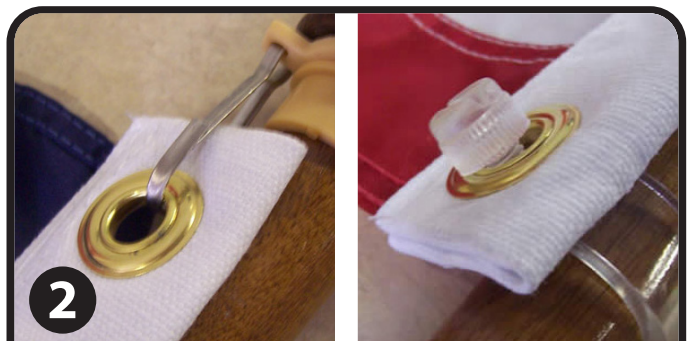
Includes:  
2-piece flagpole with ball top  
Ground sleeve  
EZ-Mount ring

*Instructions for flags finished with heading and grommets or pole sleeves with sewn-in tabs*



1

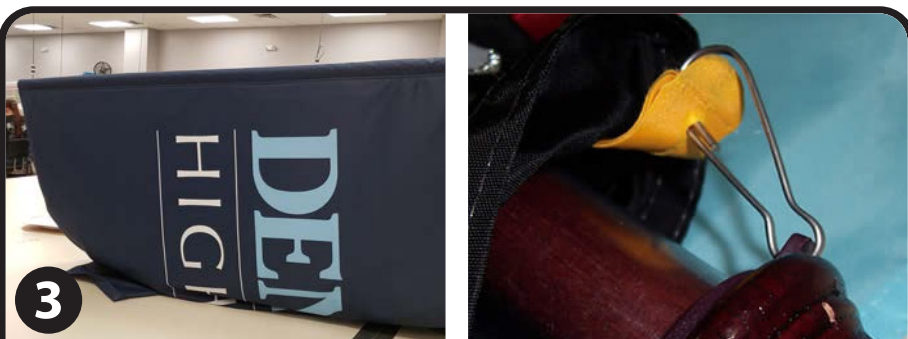
Remove foil tie from pole. *For use with flags with heading and grommets, you may wish to slide the EZ-mount ring onto the top pole prior to assembling 2-piece flagpole.* Line up hole of top pole section with button on bottom pole section. Depress button and slide top pole down until poles are locked together.



2

**For flags with heading & grommets:**

Attach top grommet of flag to metal hook at top of flagpole. Attach bottom grommet to flagpole using EZ-mount ring. (A) Slide ring onto the pole. (B) Place EZ-mount screw through the grommet. (C) Tighten screw into the ring until it is snug. *Skip to step #4.*



3

**For flags with pole sleeves & sewn-in tabs:**

Insert the bottom of the flagpole into the top of the pole sleeve and slide flag to the top of the flagpole. Attach the metal hook to the tab inside the pole sleeve of the flag.



4

To install the ground sleeve, use a rubber mallet to hammer the sleeve into the ground. Insert bottom of pole into sleeve.



This product is for outdoor promotional use only and should not be left out in extreme weather conditions. Please use common sense guidelines and do not display this product outdoors when extreme winds or storms may be present.

# INSTRUCTIONS

## Aluminum Display Pole for use with Spirit Flags



Includes:  
2-piece flagpole with ball top  
Ground sleeve  
EZ-Mount ring (included with hardware but will not be used when displaying flags with pole sleeves sewn closed at the top)



1

Unscrew and remove the gold ball top, ring with clip and foil tie from pole.  
Note: You will not reattach the pieces you just removed.



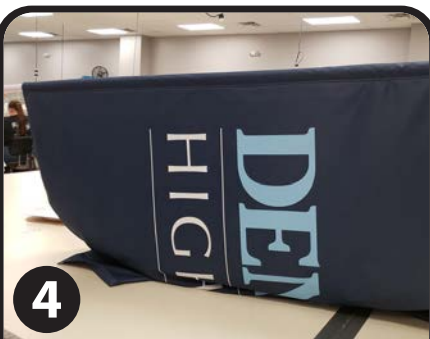
2

Line up hole of top pole section with button on bottom pole section. Depress button and slide top pole down until poles are locked together.



3

Insert the top of the flagpole into the bottom of the flag's pole sleeve and slide flag down the flagpole.



4

Continue to slide the flag down the flagpole until the top of flagpole reaches the closed end of pole sleeve.



5

To install the ground sleeve, use a rubber mallet to hammer the sleeve into the ground. Insert bottom of pole into sleeve.



This product is for outdoor promotional use only and should not be left out in extreme weather conditions.

Please use common sense guidelines and do not display this product outdoors when extreme winds or storms may be present.