

Stand out at any event with Tents!



- Fire and weather resistant 600D canopy
- All kits include canopy, frame, stake/rope kit and carrying case with wheels

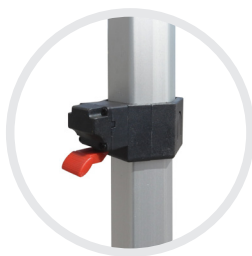
10' Square canopy tent
with double sided 1 full
and 2 half walls
CPT-3003T1KD

With **full color** printing
on all peaks, valances and walls
at no extra charge!



Standard Frames

- Sturdy aluminum frame
- Great for easy portability and transportation



Heavy Duty Frames

- Heavy duty 40mm thick aluminum frame
- Hexagonal legs with easy press-button snap locks

CLICK • TAP • SCAN



great for: Trade Shows • Businesses • Food and Beverage • Sports

Flip
for more

asi / 80228 sage / 69908 ppai / 360359

Personalized sell sheets available - contact us for more info

For complete product descriptions, pricing and compliance,
please visit www.quinnflags.com



Full color fabric printing made easy.



10' x 10'

Canopy tent
CPT-1010

Heavy duty canopy tent
CPT-1010HEX

10' x 20'

Heavy duty canopy tent
CPT-1020HEX

6.5' x 6.5'

Canopy tent
CPT-6565

Tent kits with full and half walls available

Packages

A variety of packages are available with 10' square canopy tents



Tent package G
CPT-6006Z



Tent package B
CPT-6001Z



Tent package J
CPT-6009Z

Accessories

Make your Tent even more customizable with these display options



Tent corners
6.5' tents - CPT-65CBS
10' tents - CPT-10CBS
20' tents - CPT-20CBS



Tent awning
for heavy duty tents
CPT-1010AWNING



Tent sandbag weights
single - CPT-5003T2S
4-pack - CPT-5003T2



Tent leg weights
CPT-5001T2

CLICK • TAP • SCAN



More tents, packages and accessories available at www.quinnflags.com

Flip
for more

asi / 80228 sage / 69908 ppai / 360359

Personalized sell sheets available - contact us for more info

For complete product descriptions, pricing and compliance,
please visit www.quinnflags.com



Full color fabric printing made easy.