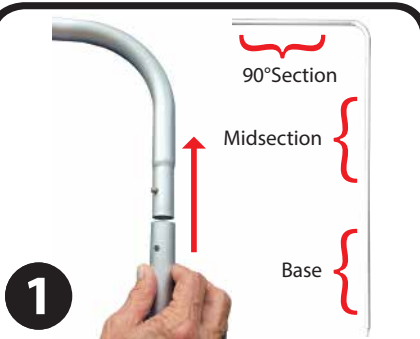


INSTRUCTIONS

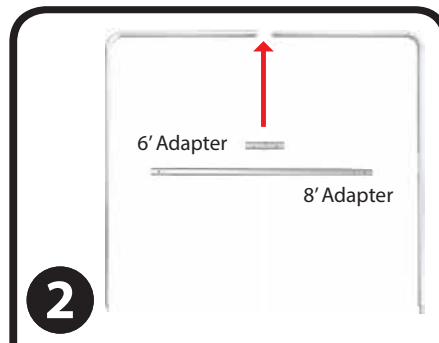
Table Top View Banners



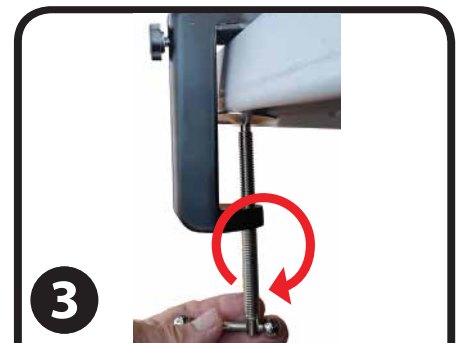
Includes:
Carry Bag & Graphic
Midsection Poles (x2)
Base Poles (x2)
90° Angled Poles (x2)
Clamps (x2)
Adapter for 6' Table / Adapter for 8' Table



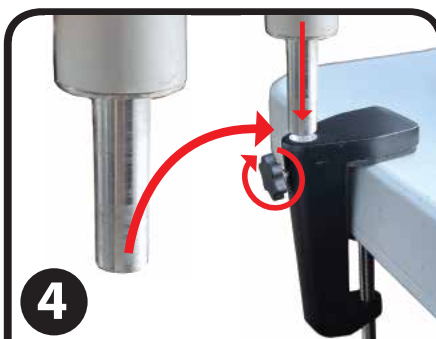
1 Each side support is composed of 3 Pole sections*. Connect the Base Pole (with pin extension) to the Midsection (only one tapered end). Connect the short end of the 90° Angled Pole to the connected pole unit. Be sure the snap button pops up through the hole to lock the joint.



2 Select the correct Adapter for the table top size. 6' tables will use the short (5") Adapter. 8' tables will need the long (28"). Position the Adapter between the side supports and join the two supports together, connect with snap buttons.



3 Position each Clamp symmetrically on opposite sides of the table. The long threaded screw will be under the table top and along the table's edge. Rotate the screw with the t-bar to tighten the Clamp.



4 Slide Base Pole pins into the holes of the table-mounted Clamps. Tighten the top knob to lock in Base Pole pin.



5 Slide the Graphic down over the assembled, sectional, Pole frame.



*For small and medium size banners, midsection poles are optional when assembling.