

INSTRUCTIONS

10' Tent Awning



Includes:
 Plastic Clamps w/Hand Screws (2)
 Medium Poles w/Peg (2)
 Short Pole with Snap Locks
 Long Poles (2)
 Graphic



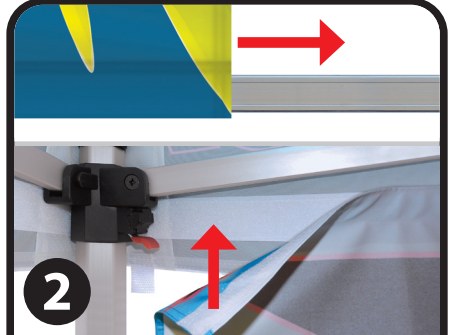
Determine which side of the tent you want to attach the awning to.

Note: plastic clamps attach to specific hexagon-shape tent legs. Check to ensure both clamps fit the desired tent legs before assembling.



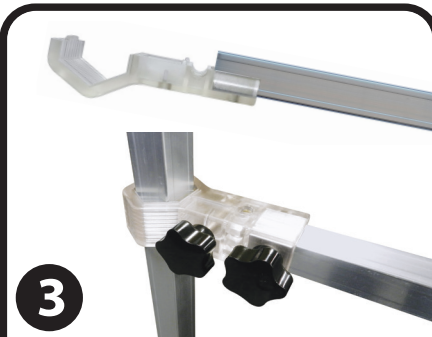
1

Line up short pole w/snap lock and one long pole as shown above. Depress snap lock and slide short pole inside long pole until snap lock is engaged. Repeat with remaining snap lock and second long pole.



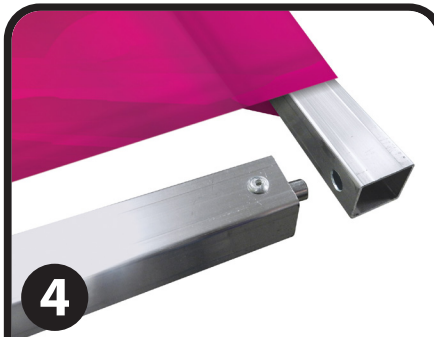
2

Carefully slide pole sleeve of graphic onto assembled pole. Use fastener strips to attach graphic to interior of tent canopy.



3

Remove hand screws from one clamp. Insert medium pole w/peg into half of clamp lining up holes. Place clamp w/ pole onto tent leg just below canopy. Line up second half of clamp, insert hand screws and tighten. Repeat with second clamp on next tent leg.



4

Lift long pole with graphic and line up holes in long pole with pegs on the arms. Place long pole fully onto the pegs.

Do not apply force, parts will connect and stay in place.



5

Loosen hand screws closest to tent leg and move the arms down or up until desired tension of awning graphic is achieved. Tighten hand screws to lock in place.

IMPORTANT: Exercise the same safety precautions used for tents



This product is for outdoor promotional use only and should not be left out in extreme weather conditions. Please use common sense guidelines and do not display this product outdoors when extreme winds or storms may be present.